

# CELESTION

## PowerProX18

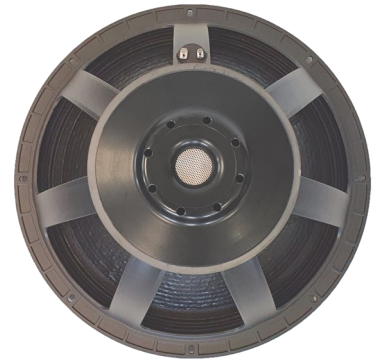
18-inch, cast aluminium chassis, ferrite magnet  
low frequency loudspeaker



**2400W**  
continuous  
power rating

**97dB**  
sensitivity

**4-inch**  
inside/outside  
voice coil



- PowerProX speakers are built for maximum reliability at extremes of performance
- Dynamic airflow venting delivers class-leading heat management with an average 20C lower voice coil temperature
- Polysiloxane laminated dual suspension provides greater stability and improved cone displacement symmetry
- Aluminium demodulation ring reduces harmonic and intermodulation distortion caused by voice coil displacement
- Double-sided, weatherproof cone coating for moisture protection and enhanced durability

### GENERAL SPECIFICATIONS

Nominal diameter.....457mm/18in  
Nominal power rating<sup>1</sup>.....1200W  
Continuous power rating<sup>2</sup>.....2400W  
Nominal impedance.....8Ω  
Sensitivity<sup>3</sup>.....97dB  
Frequency range.....35Hz-1000Hz  
Voice coil diameter.....100mm/4in  
Chassis type.....Cast Aluminium  
Magnet type.....Ferrite  
Magnet weight.....3.5kg/124oz  
Coil material.....Round copper  
Former material.....Glass fibre  
Cone material.....Glass fibre loaded cellulose  
Surround material.....Cloth-sealed  
Suspension.....Dual. Polysiloxane laminated  
Gap height (H<sub>g</sub>).....12.75mm/0.5in  
VC winding height (H<sub>v</sub>).....25mm/0.98in

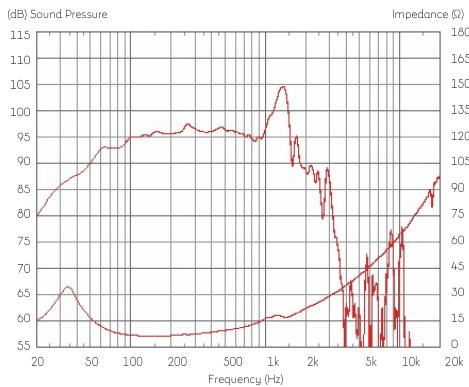
### PARAMETERS<sup>4</sup>

Sd.....1210.0cm<sup>2</sup>/187.6in<sup>2</sup>  
Fs.....34.8Hz  
Mms.....229.98g/8.1oz  
Qms.....3.147  
Qes.....0.431  
Qts.....0.379  
Re.....5.1Ω  
Vas.....188.9lt/6.67ft<sup>3</sup>  
Bl.....24.38Tm  
Cms.....0.091mm/N  
Rms.....15.96kg/s  
Le (at 1kHz).....1.61mH  
Xmax<sup>5</sup>.....±9.3mm/0.37in  
Xmech<sup>6</sup>.....±48mm/1.9in  
Efficiency η<sub>p</sub>.....1.8%

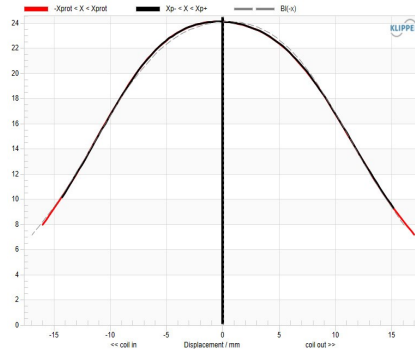
### MOUNTING INFORMATION

Overall diameter.....460mm/18.1in  
Overall depth.....225mm/8.9in  
Cut-out diameter.....414mm/16.29in  
Bolt circle diameter...441-432mm/17.36-17.01in  
Mounting hole size...11mm x 7mm/0.43in x 0.28in  
Number of mounting slots.....8  
Flange & gasket thickness.....16.2mm/0.64in  
Unit Weight.....13.2kg/29.1lb

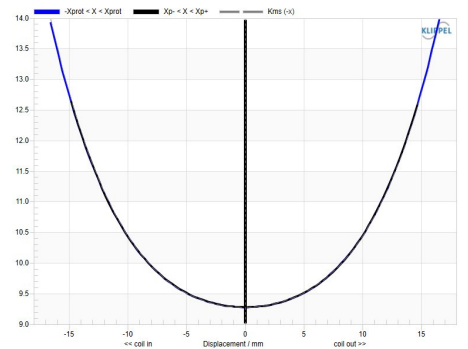
### FREQUENCY RESPONSE AND IMPEDANCE



### BL (FORCE FACTOR) SYMMETRY



### STIFFNESS (K) SYMMETRY



1. Tested for two hours using continuous, band-limited pink noise signal per AES standard. Power calculated on minimum impedance. Loudspeaker tested in free air. 2. Continuous Power Rating defined as 3dB greater than nominal rating. 3. Measured on axis at 1W, 1m in 2n anechoic environment. 4. Measured after unit subjected to pre-conditioning signal. 5. Xmax = 0.5\*(Hvc-Hg) + 0.25\*Hg. 6. Max. peak to peak excursion before damage.