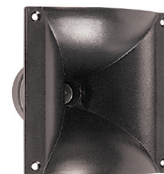
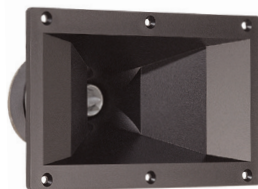
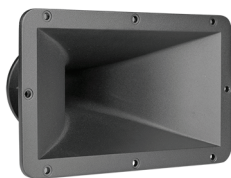


EMINENCE HORN FLARES AND SUPERTWEETER OPTIONS

APT horn flares are available separately for use with any driver with 1 3/8" ext. thread.






	APT:80	APT:150	APT:200
Description	APT:50 Driver with APT:80S Horn	APT:50 Driver with APT:150S Horn	APT:50 Driver with APT:200S Horn
Type	Conical	Constant Directivity	Bi-Radial
Throat Size	1.0", 25.4 mm	1.0", 25.4 mm	1.0", 25.4 mm
Dispersion	80° Conical	100 x 50	90 x 90
Power Rating	35 W (AES)	35 W (AES)	35 W (AES)
Nominal Impedance	8 Ω	8 Ω	8 Ω
Minimum Impedance	7.3 Ω @ 6 kHz	7.7 Ω @ 6 kHz	7.3 Ω @ 6.1 kHz
Sensitivity	102.3 dB	102.4 dB	103 dB
Resonance	1.5 kHz	2.7 kHz	2.6 kHz
Recommended Crossover	3.5 kHz / 12 dB	3.5 kHz / 12 dB	3.5 kHz / 12 dB
Width/Height/Depth	3.40 x 3.40 x 3.70 in., 86.4 x 86.4 x 94.0 mm	7.60 x 4.50 x 5.10 in., 193.0 x 114.3 x 129.5 mm	5.90 x 6.00 x 6.30 in., 149.9 x 152.4 x 160.0 mm
Cut-out	3.15 x 3.15 in., 80 x 80 mm	6.7 x 3.4 in., 170 x 86 mm	4.3 x 4.3 in., 109 x 109 mm
Weight	1.80 lb., 0.82 kg	1.90 lb., 0.86 kg	2.50 lb., 1.13 kg
Material	ABS	ABS	ABS



	H290S	H14EA	H2EA	BH410
Type	Radial	Exponential	Exponential	Exponential
Throat Size	1.0", 25.4 mm	1.4", 35.6 mm	2.0", 50.8 mm	1.0", 25.4 mm
Attachment Method	Screw-on or Bolt-on (H290B)	Bolt-on	Bolt-on	Screw-on
Dispersion	90 x 40	60 X 40	60 x 40	60 x 60
Recommended Crossover	1.0 kHz	600 Hz	700 Hz	1.2 kHz
Width/Height/Depth	11.7" x 6.6" x 6.6", 297.2 x 167.6 x 167.6 mm	12.60" x 7.50" x 7.90", 320 x 190.5 x 200.7 mm	12.4" x 7.3" x 6.1", 315 x 185.4 x 154.9 mm	5.59" x 5.59" x 4.38", 142 x 142 x 111.3 mm
Cut-out	9.7 x 4.9", 246 x 124 mm	11.3 x 6.1", 287 x 155 mm	11.3 x 6.3", 287 x 160 mm	3.56 x 3.56", 90.4 x 90.4 mm
Weight	1.10 lb., 0.50 kg	4.80 lb., 2.18 kg	4.90 lb., 2.22 kg	0.35 lb., 0.16 kg
Material	ABS	Aluminum	Aluminum	ABS

EMINENCE ADAPTORS AND USAGE GUIDE

ADAPTORS	
	<p>B2S-A</p> <p>Aluminum adaptor converts bolt-on driver to accept a screw-on horn. 2x 1/4-20 or 3x M6 driver to 1 3/8" 18 thread horn.</p>
	<p>S2B-A</p> <p>Aluminum adaptor converts screw-on driver to accept a bolt-on horn. 1 3/8" 18 ext. driver to 2x 1/4-20 or 3x M6 horn.</p>
CABINET HARDWARE	
	<p>TOP HAT-CH</p> <p>Adjustable-angle speaker stand receptacle for loudspeaker boxes. Vertical angle can be adjusted in 4° increments to +/- 18°. Fits SPS56B and most other standard speaker stands. Internal Ø 36mm. Black polyamide. Patent pending.</p>

USAGE GUIDE	
DRIVER	HORN OPTION
N314T-8	H14EA
N320T-8	H2EA
APT:50	APT:80S
	APT:150S
	APT:200S
	BH410
	H290S
ASD1001S	APT:150*
	APT:200S
	H290S
	BH410
ASD1001B	H290B
NSD2005S	APT:150S*
	APT:200S
	H290S
	BH410
NSD2005B	H290B
PSD2002S	APT:200S*
	H290S*
PSD2002B	H290B
PSD2013S	APT:200S*
	H290S*
PSD2013B	H290B
PSD3006	H2EA

* Driver bracing recommended



The Art and Science of Sound

*From design and manufacturing to the stage or studio.
Once you've experienced the performance of Eminence,
you'll never accept anything else.*

MISSION STATEMENT

*Eminence is dedicated to providing the best Quality, Value
and Service to meet our customers' needs.*

Follow us:

EMINENCE.COM



838 Mulberry Pike, Eminence, KY 40019