

# Hoellstern® Amplifiers are System

## Audiophile :

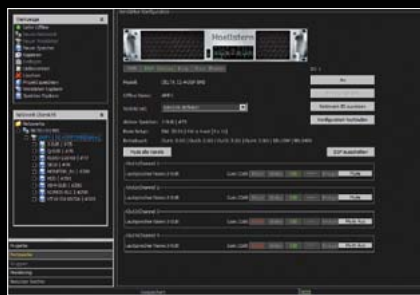
The Hoellstern typical load stability controls loudspeakers perfectly. Sound engineers are amazed how sound systems in-the-face perform acoustically. Strong Hoellstern currents moving speaker cones.

## Flexible :

Define yourself the DSP technology and setups via drag & drop. Select true-to-the-original DSP presets with pre-defined filters such as HFA, HFC, CPL, AEQ, CUT ON/OFF, FR, FIR-Plateau and more. You specify your system in few seconds.

## Cool :

The sophisticated Hoellstern iCVP technology with double the electrical efficiency allows a powerful operation on 16 A Schuko mains sockets. The high burst current draw capability and the huge energy buffers enable enormous output power values. Hoellstern means effective, strong and dynamic loudspeaker control instead of 32 A plugs and hot air. Hoellstern Amplifiers are green products.



- 📁 Lautsprecher Setups(V1.0)
- 📁 ADAMSON
- 📁 ALCONS AUDIO
- 📁 APOGEE
- 📁 CODA
- 📁 CONCERT AUDIO
- 📁 CUSTOM
- 📁 D&B
- 📁 DANLEY
- 📁 EAW
- 📁 FBT
- 📁 FOHNN
- 📁 FREE
- 📁 GAE
- 📁 HK AUDIO
- 📁 JBL
- 📁 KLING&FREITAG
- 📁 LACOUSTICS
- 📁 NEXO
- 📁 PROAUDIO TECHNOLOGY
- 📁 SEEBURG
- 📁 SYRINCS
- 📁 TWAUDIO



# Hoellstern® amplifies. Since 2004.



## Exceptionally good – strikingly audiophile – definitely cost-efficient.

Hoellstern® amplifiers are “engineered and made in Germany”. For you this means: designed and manufactured in top quality. The no-compromise components and a circuit design in compliance with spaceflight criteria ensure utmost reliability.

- ✓ Extremely audiophile signal amplification.
- ✓ Load stable – high current capable outputs.
- ✓ Unique, true to original loudspeaker libraries all system relevant features.

Amplifier (option)	In x Out	Output Power							
		8 Ohm	6 Ohm	4 Ohm	2.7 Ohm	2 Ohm	1.6 Ohm	1 Ohm	Bridged
DELTA6.2-DSP	2x2	850 W	1,275 W	1,700 W	2,550 W	3,400 W	–	–	6,800 W
DELTA7.2(-DSP)	2x2	1,000 W	1,325 W	2,000 W	3,000 W	4,000 W	5,000 W	–	10,000 W
DELTA12.2(-DSP)	2x2	2,200 W	2,900 W	4,400 W	6,300 W	8,000 W	–	–	16,000 W
DELTA12.4(-DSP)	4x4	600 W	800 W	1,150 W	1,700 W	2,200 W	2,600 W	4,400 W	8,000 W
DELTA8.4-DSP	4x4	1,300 W	1,700 W	1,700 W MODE: OFF	–	–	–	–	3,400 W MODE: OFF
DELTA13.4(-DSP)	4x4	1,300 W	1,700 W	2,600 W	3,800 W	3,400 W MODE: OFF	–	–	7,600 W
DELTA14.4(-DSP)	4x4	1,300 W	1,700 W	2,600 W	3,800 W	5,000 W	–	–	10,000 W
DELTA20.4(-DSP)	4x4	2,200 W	2,900 W	4,400 W	6,300 W	8,000 W	–	–	16,000 W

Options	Description
-DSP	2-channel amplifier: 2 IN – 2 OUT DSP with built-in loudspeaker management
	4-channel amplifier: 4 IN – 4 OUT DSP with built-in loudspeaker management
DSP-Library	Unique and faithful Hoellstern® loudspeaker libraries for more than 25 speaker companies with over 435 loudspeaker blocks (12/2015). Complete with FIR filters, system specific settings and free user settings.
Software	Hoellstern® Konfigurator2 – for Windows and Macintosh operating systems.

AC mains input	180 VAC to 265 VAC, operational from 70 VAC
Alimentation secteur AC	Highly efficient power supply and amplifier technology: Halved power demand with an average current consumption of 10 A or 16 A resp. 
Dimensions and weight	Width: 19" (483 mm) – Height: 2 RU – Depth: 30 cm (!) Weight: 10 – 12 kg 

**Hoellstern®**  
**AUDIO AMPLIFIERS**  
*Since 2004*

**Manufacturer:**  
**ASID GmbH**  
 Eichstetter Strasse 55  
 79232 March / Germany  
 info@hoellstern.com  
 www.hoellstern.com