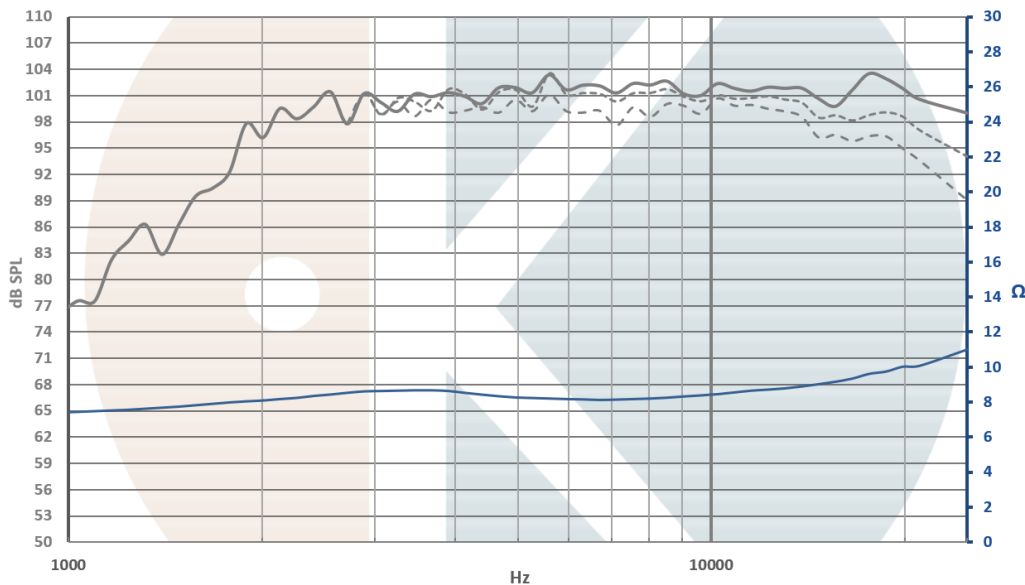


Cmp25_vHP

High quality compression driver with dedicated horn.



Compression driver with low compression rate through the phase plug and direct front radiation.
The back cover is designed to cool the voice coil through the motor structure.
It reproduces 3000Hz to 25000Hz with extreme linearity, and very low distortion.



On IEC baffle / Distance: 1m / Signal input: 2,83V / High pass filter at 1000Hz (48dB/Oct)
Dash curves: 20° & 40° / Smoothing: 1/24 Octave/ Impedance measured with dedicated round horn

Cmp25_vHP

Our products can be adapted to your technical requirements and brand spirit.

www.Kartesian-acoustic.com Engineered and produced in France

Datasheet edition 3



Advanced construction

Membrane

Mylar diaphragm

Suspension

Integrated on the dome

Voice coil:

Ø25mm, CCA wire

KSV former

Motor structure:

NdFeB magnet structure

Optimized pole pieces

14600 Gauss on 2.2mm height

Frame

Injected aluminum back plate

Exponential round horn (Fc: 2000Hz)

Horn made in PA12 material

T&S

Fs 1850Hz *(without horn)*

SPL 102dB/2.8V/1m

Re 7.2Ω

Qms -

Qts -

Bl 3.18N/A

VAS -

Mms 0.21g

Sd 4.92cm²

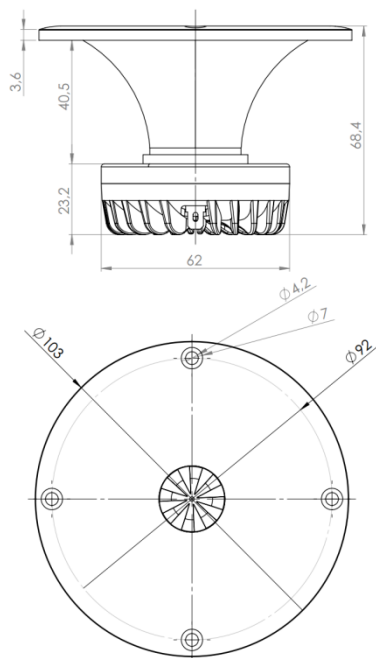
Linear excursion: +/-0.3mm

Maximal excursion: +/-0.5mm

Nominal power: 20W

Maximal power handling: 40W

(with high-pass filter, 12dB/Oct at 2000Hz)



Integrated innovation



.monoKore



.Kooling

Visit our website to discover our innovation

Cmp25_vHP

Our products can be adapted to your technical requirements and brand spirit.

www.Kartesian-acoustic.com Engineered and produced in France

Datasheet edition 3

