

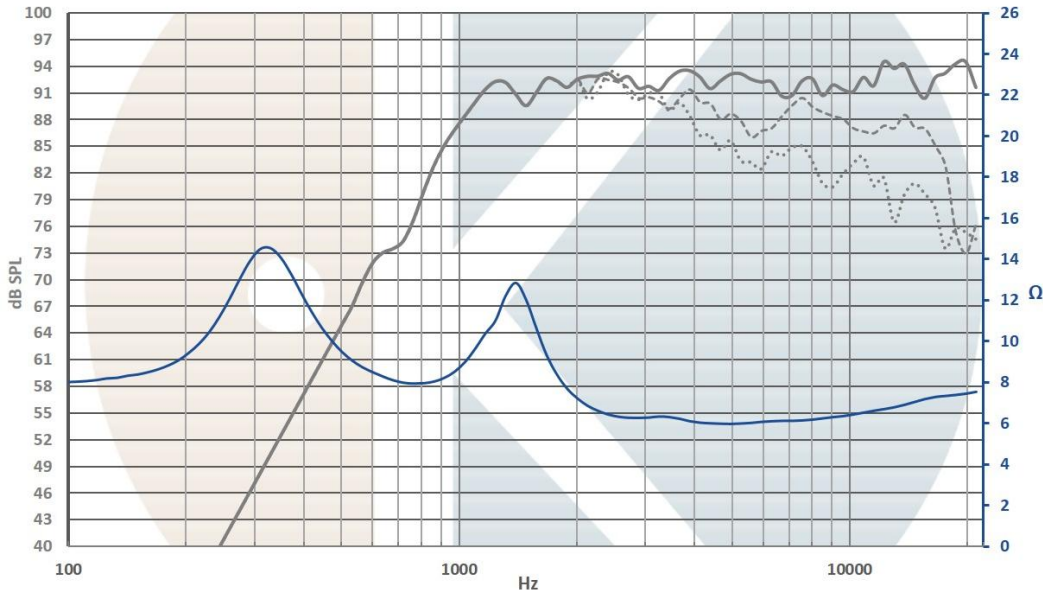
## Twt30\_vMS

High quality 30mm soft dome tweeter.



Twt30\_vMS is a sublime 30mm soft dome with large surround, dedicated to uncompromising 2 ways systems. It covers the frequency range from 1,2kHz to 22kHz (+/-2dB) with an impressively flat frequency response, and very low THD rate.

To get the best performances, we suggest to use it from 2kHz with 12dB/Oct high pass filter.



On IEC baffle / Distance: 1m / Signal input: 2,83V / High pass filter at 500Hz (48dB/Oct)

Dash curve : 30° & 60° / Smoothing: 1/12 Octave

## Twt30\_vMS

Our products can be adapted to your technical requirements and brand spirit.

[www.Kartesian-acoustic.com](http://www.Kartesian-acoustic.com) \_ Phone: +33 6 8035 4115 \_ Rue des Rossignols, 67450 Ostwald, France



## Advanced construction

### Membrane

Proprietary treated soft dome

### Suspension

Large roll, integrated on the dome

### Voice coil:

Ø30.5mm, CCA wire

Aluminum vented former

### Motor structure:

Dual high grade NdFeB magnets

Advanced and vented pole pieces

18000 Gauss on 3mm height

### Frame

Aluminum injected front plate

Aluminum back chamber

Innovative twin rear chambers system to decrease THD in lower frequency.

## T&S

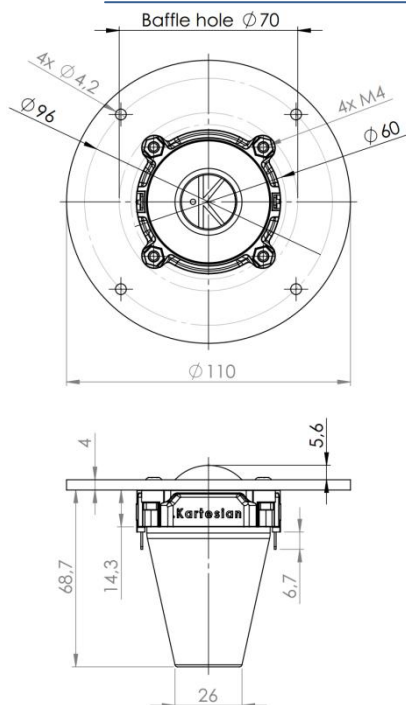
Fs 320Hz (*1<sup>st</sup> impedance peak*)  
SPL 93dB/2.8V/1m  
Re 5.2Ω

Qms -  
Qts -  
Bl 2.65N/A

VAS -  
Mms 0.31g  
Sd 7.55cm<sup>2</sup>

Linear excursion: +/-0.4mm  
Maximal excursion: +/-0.7mm

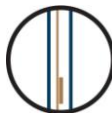
Nominal power: 30W  
Maximal power handling: 40W  
(*with high-pass filter, 12dB/Oct at 1500Hz*)



## Integrated innovation



.foKus field



.Konstant Bl(X)



.Konstant Le(X)



.Koupled chambers

Visit our website to discover our innovation

## Twt30\_vMS

Our products can be adapted to your technical requirements and brand spirit.

[www.Kartesian-acoustic.com](http://www.Kartesian-acoustic.com) \_ Phone: +33 6 8035 4115 \_ Rue des Rossignols, 67450 Ostwald, France

