

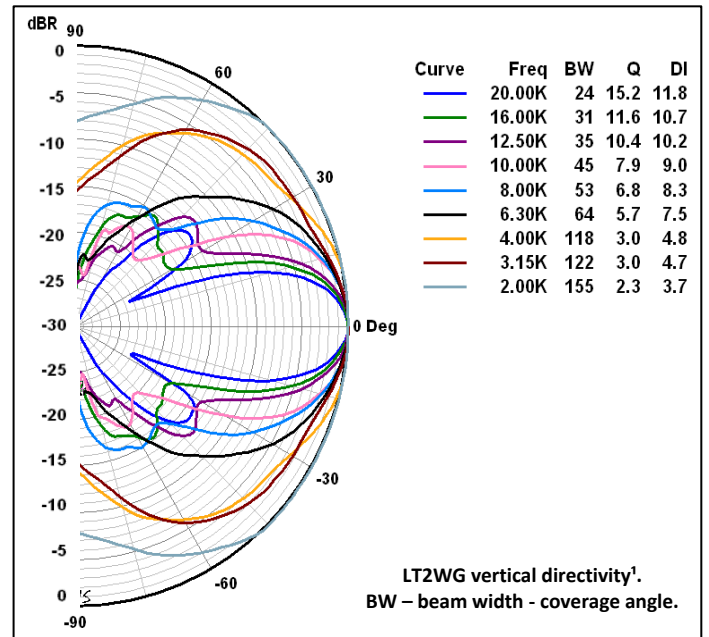
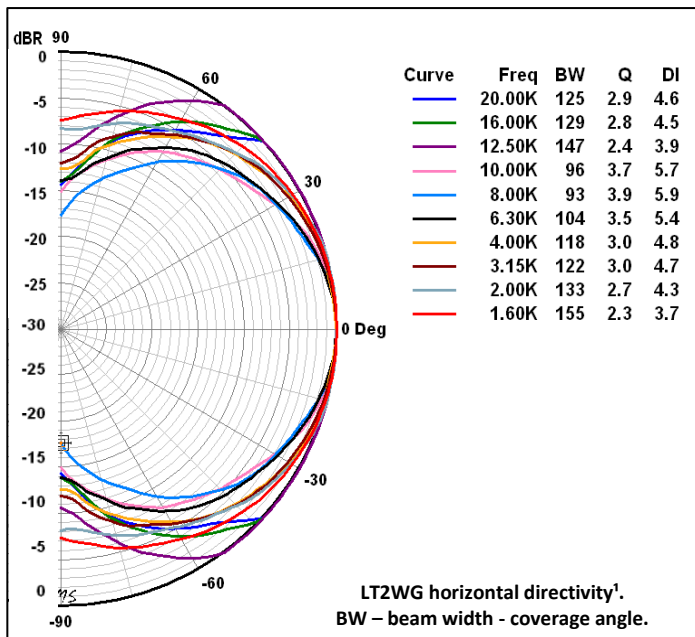
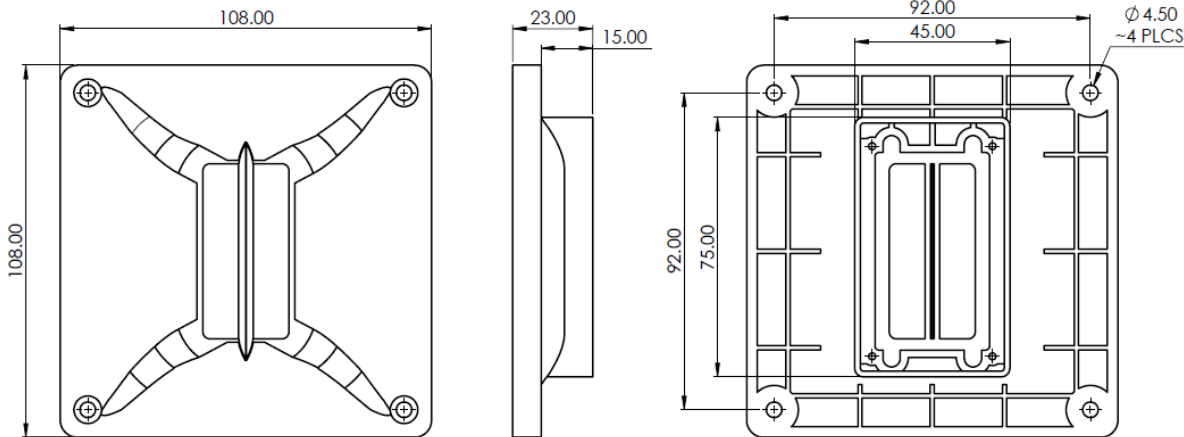
LT2WG HF wave guide



- constant directivity design in horizontal plane with minimized boundary diffraction effects
- structurally reinforced, high strength polymer with excellent dimensional stability
- rotatable at 90 degrees

SPECIFICATIONS

Overall size	108x108x24.8 mm (4.25x4.25x0.98 in)
Material	composite polymer
Horizontal coverage	120 °
Vertical coverage	60 °
Flange thickness	9.0 mm (0.35 in)
Net weight	68 g (0.15 lbs.)



1. Measured and defined for Radian LT2 planar ribbon driver. Horizontal coverage angle defined at -6dB, averaged in 1/3 octave bands within 2- 20 kHz range. Vertical coverage angle averaged within 2 -10 kHz range.